



PROVINCIAL DEPARTMENT OF EDUCATION - NORTH WESTERN PROVINCE

SECOND TERM TEST 2019

Grade 06

MATHEMATICS

Two hours

Name / Index No. :

PART - I

- Answer the question from 01 - 20 on the paper itself.
- Each question in part I carries 02 marks.

01. Simplify. $\frac{2}{7} + \frac{3}{7}$

02. Select and underline the rectilinear closed plane figures.



03. Fill in the blanks with appropriate symbol $<$, $>$ or $=$

$$\frac{5}{9} \dots\dots\dots \frac{2}{9}$$

04. In the pattern of triangular numbers as 1, 3, 6, 10, write down the next term.

05. Write the relevant values in the boxes.

$$\frac{2}{7} = \frac{2 \times 3}{7 \times \square} = \frac{6}{\square}$$

06. Write 2.45 p.m. in international standard form.

07. Separate the collection given in the circle into two groups based on their common characteristics and write them in the circles.



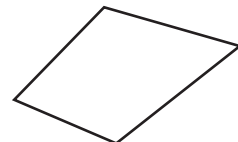
08. Fill in the blanks.

$$794\text{cm} = \dots\dots\dots\text{m} \dots\dots\dots\text{cm}$$

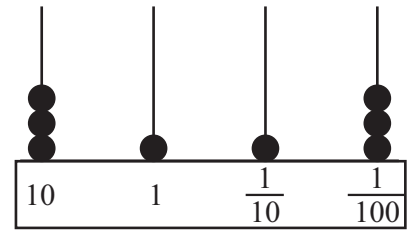
09. Simplify.

$$3.85 + 12.7$$

10. Write down the geometrical name for the given figure.



11. Write down the number shows in the number frame (abacus)



12. Evaluate. $\frac{4}{7} - \frac{5}{14}$

13. Write all the possible digits for the ones place the number which are divisible by 2.

14. Write the number in words given below.

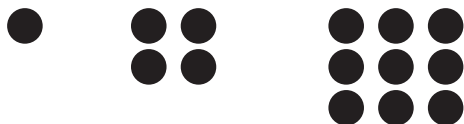
12.31

15. Suwini has Rs. 500.00. Find the balance if she bought a book cost of Rs. 375.00 and three pens of Rs. 20.00 each.

16. Write down the numbers in descending order given below.

2, 1.1, 0.4, 0.2, 0.7

17. Draw the 5th square number pattern according to the pattern given below.



18. Write down the following number in standard form and write it in words.

37489018

19. Write the multiples of 7, between 40 and 80.

20. In cube,

(i) What is the shape of the face ?

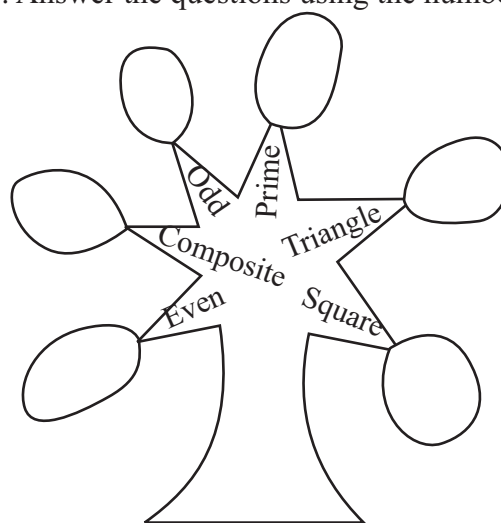
(ii) Find the number of faces.

PART - II

- Answer the 1st question and 04 other questions.
- 1st question carries 16 marks and all the other questions carry 11 marks each.

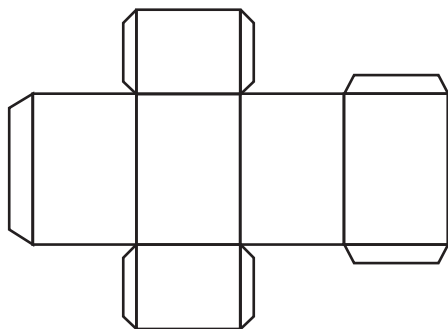
01. The following number card given for you as an activity. Answer the questions using the number card given below.

1	2	3	4	5	6
7	8	9	10	11	12
13	14	15	16	17	18
19	20	21	22	23	24
25	26	27	28	29	30

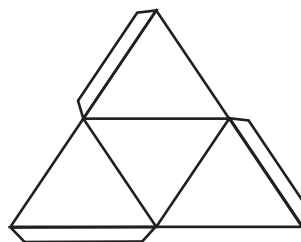


- (i) Copy the number tree in your answer sheet and write 5 suitable numbers in each circle. (12 marks)
- (ii) Represent the largest triangular number in this card by a dotted pattern. (02 marks)
- (iii) Write down the smallest number which is an even, composite and a triangular number. (02 marks)

02. The following figures shows 2 nets (frames) to create solids.



A



B

- (i) Write down the name of the solids that can be made using the above nets A and B respectively. (02 marks)
- (ii) Write down the specific name of the shape of the face in solid B? (01 mark)
- (iii) Write down the number of vertices, edges and faces of the solid made by using the net A. (03 marks)
- (iv) Express the name of another solid which you have made and mention two examples for that solid which can be seen in the environment. (03 marks)
- (v) Draw an another different net to make the solid B? (02 marks)

03. (i) Fill in the blanks using the symbols $>$, $<$ or $=$ (02 marks)

(a) $\frac{5}{11}$ $\frac{4}{11}$

(b) $\frac{3}{5}$ $\frac{6}{10}$

- (ii) Write down the following fractions in ascending order. (02 marks)

$\frac{2}{3}$, $\frac{2}{6}$, $\frac{2}{10}$, $\frac{2}{5}$

- (iii) Write down two unit fractions. (02 marks)

- (iv) Simplify.

(a) $\frac{3}{4} + \frac{1}{12}$

(02 marks)

(b) $\frac{4}{7} + \frac{1}{7}$

(01 mark)

(c) $\frac{11}{15} - \frac{3}{5}$

(02 marks)

-
04. Consider the shaded part in the figure.



- (i) Write it as a fraction. (01 mark)

- (ii) Write it as a decimal. (01 mark)

- (iii) Write down in words the above (ii) answer. (01 mark)

- (iv) Simplify. (04 marks)

(a)
$$\begin{array}{r} 25.73 \\ - 13.67 \\ \hline \\ \hline \end{array}$$

(b) $5.32 + 2.7$

- (v) Father distributed $\frac{1}{3}$, $\frac{1}{4}$ and $\frac{1}{12}$ of his money among his three children.

- (a) Write down the total amount given to the children as a fraction. (02 marks)

- (b) What fraction is remained to the father? (02 marks)

-
05. (a) (i) Draw a rectangle and mark its width as 8cm. (02 marks)

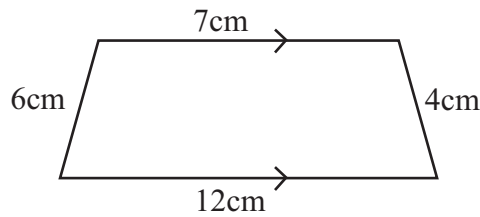
- (ii) If its length is twice of the width,

- (a) find the length. (01 mark)

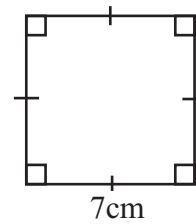
- (b) Mark the length on the figure. (01 mark)

- (iii) Find the perimeter of that rectangle. (03 marks)

(b)



(A)



(B)

- (i) Write down the name of the plane figures denoted by (A) and (B). (02 marks)
- (ii) Mention a specific feature in plane figure (A). (01 mark)
- (iii) Mention a specific feature in plane figure (B). (01 mark)

06. Answer the following questions by using given number cards.

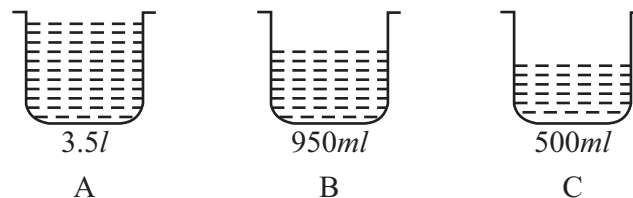


- (i) Write two multiples of 3. (02 marks)
- (ii) Write down all the multiples of 5 and select the largest one. (03 marks)
- (iii) Write down three numbers which are the multiples of both 5 and 10. (03 marks)
- (iv) Write all the factors of 12. (03 marks)

07. (a) Square, Cube, Cuboid, Triangle, Parallelogram, Rhombus, Quadrilateral, Tetrahedran, Rectangle, Trapezium, Cylinder

- (i) Separate the above items into two groups according to a common characteristic and write down suitable names for each group. (06 marks)

(b) The following figure shows the volume of water fill in the vessels A, B and C.



- (i) Write down the volume of water in millilitres in vessel A. (01 mark)
- (ii) Find the total volume of water in vessels A and C. (01 mark)
- (iii) What is the difference between volumes of water in A and B? (03 marks)